

# CHANTICLEER

ELEVATION 1



THOUGHTFULLY DESIGNED & BEAUTIFULLY BALANCED.

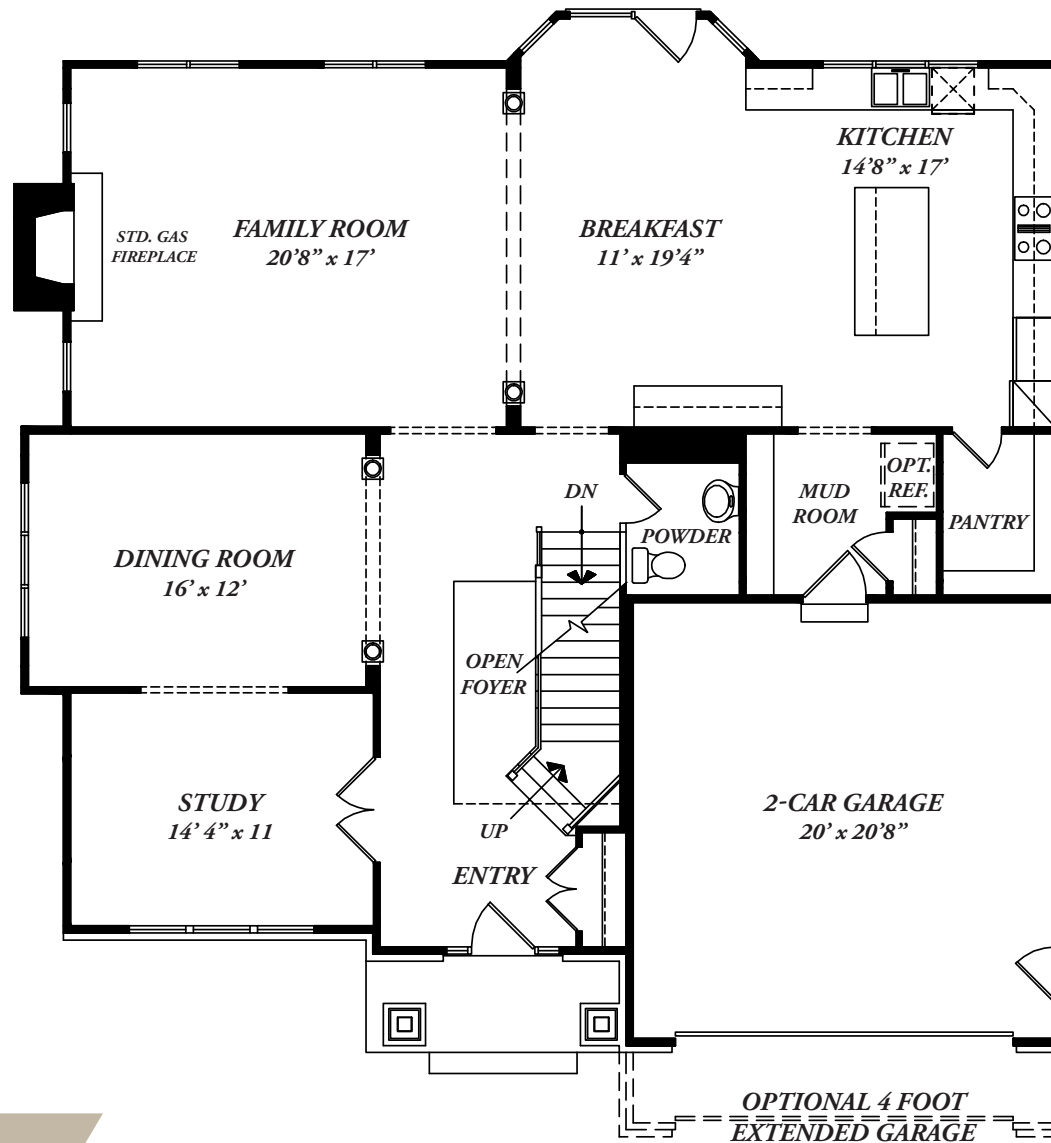


**THE CHANTICLEER offers a spacious open plan design with a sophisticated elegance.**

The dining room can accommodate a large number of guests for special gatherings while the entire rear of the home is focused on comfort for day-to-day living with a gourmet-appointed island kitchen, spacious family room and convenient mud room off the garage. Your main level also features a private study. Upstairs, enjoy four light-filled bedrooms, each with a private, luxuriously detailed bath. Your lower level includes a fifth bedroom with bath, finished recreation room with optional custom wet bar, and an optional sixth bedroom/exercise room to expand your living pleasure.

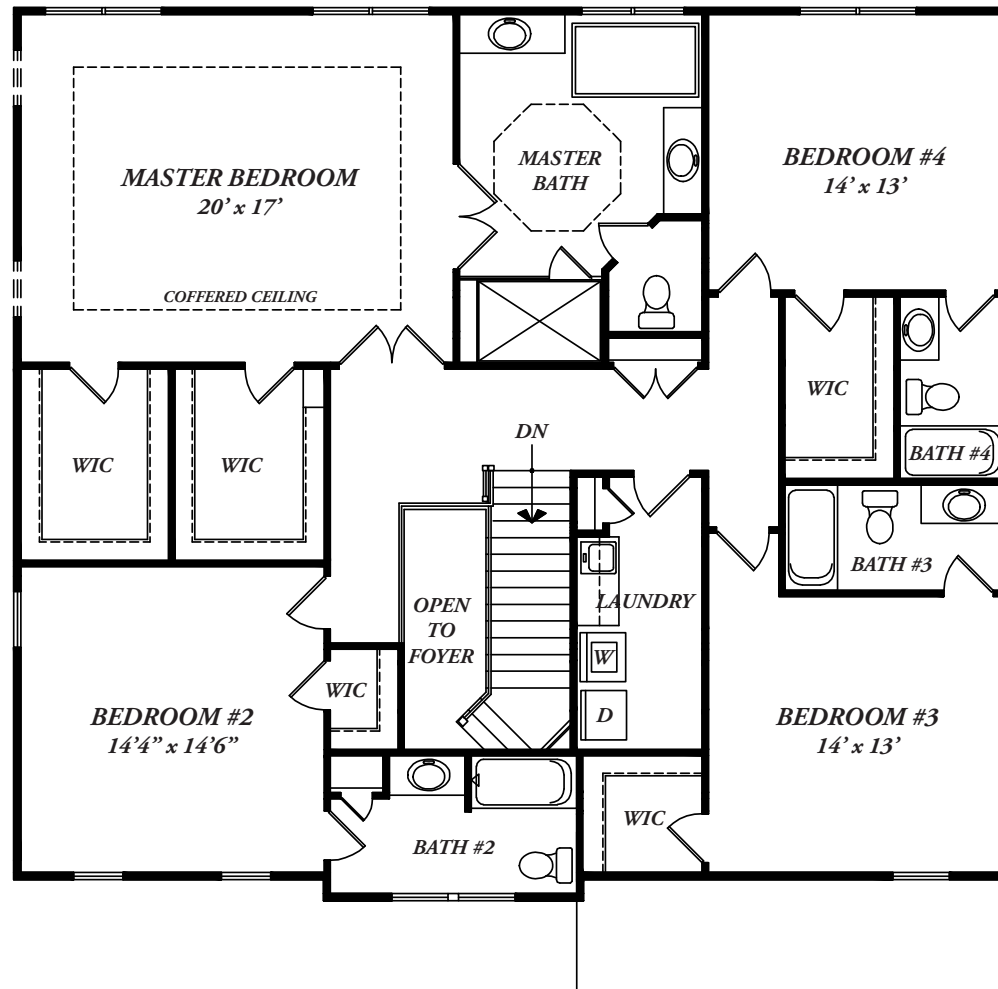


# CHANTICLEER



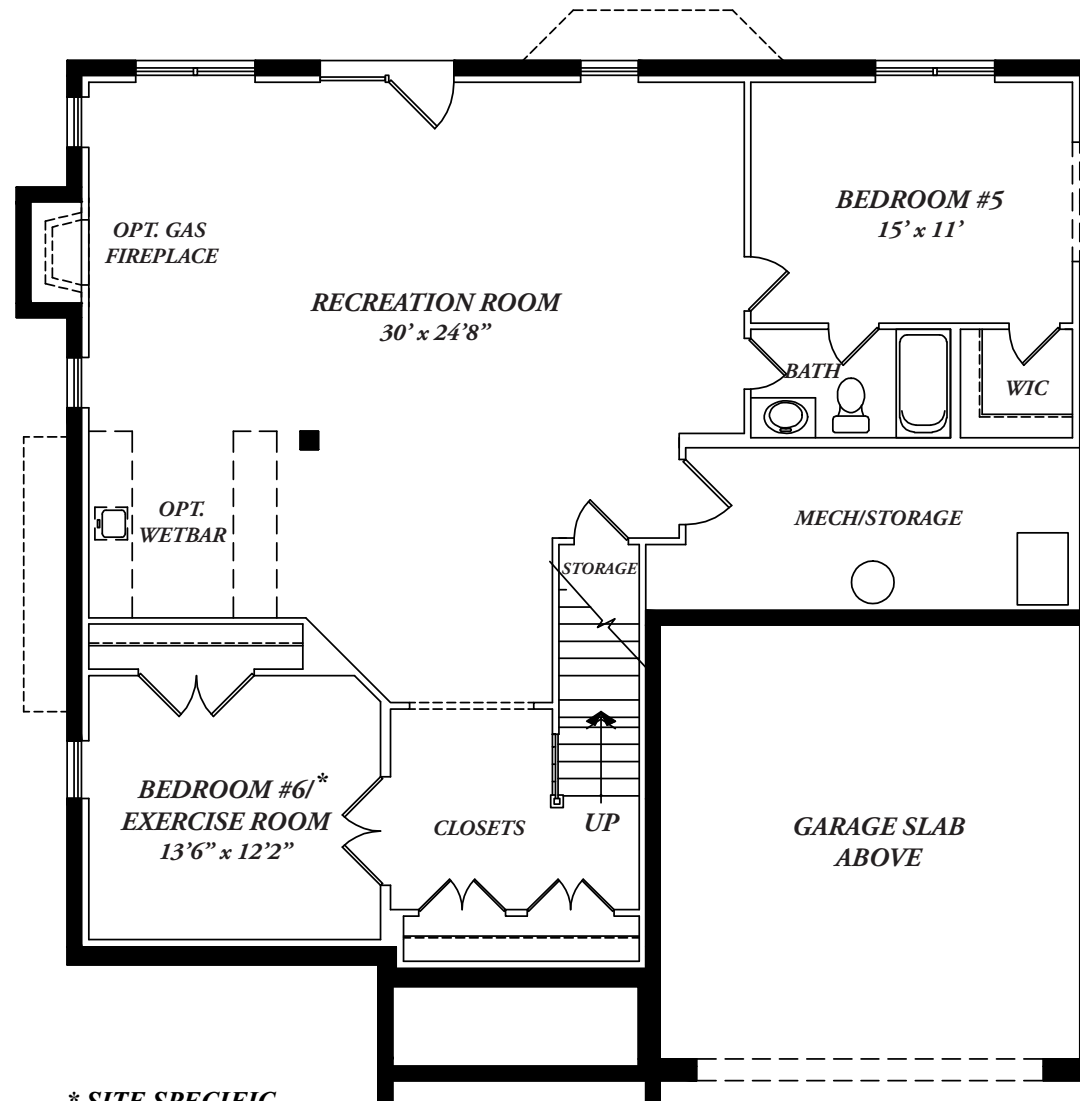
## FIRST FLOOR

# CHANTICLEER



## SECOND FLOOR

# CHANTICLEER



\* SITE SPECIFIC

LOWER LEVEL

ELEVATION 2



[SEKASHOMES.COM](http://SEKASHOMES.COM)