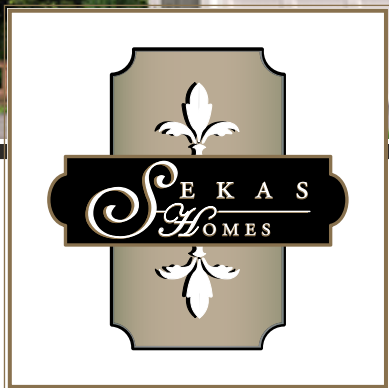


# HIXTON

ELEVATION A

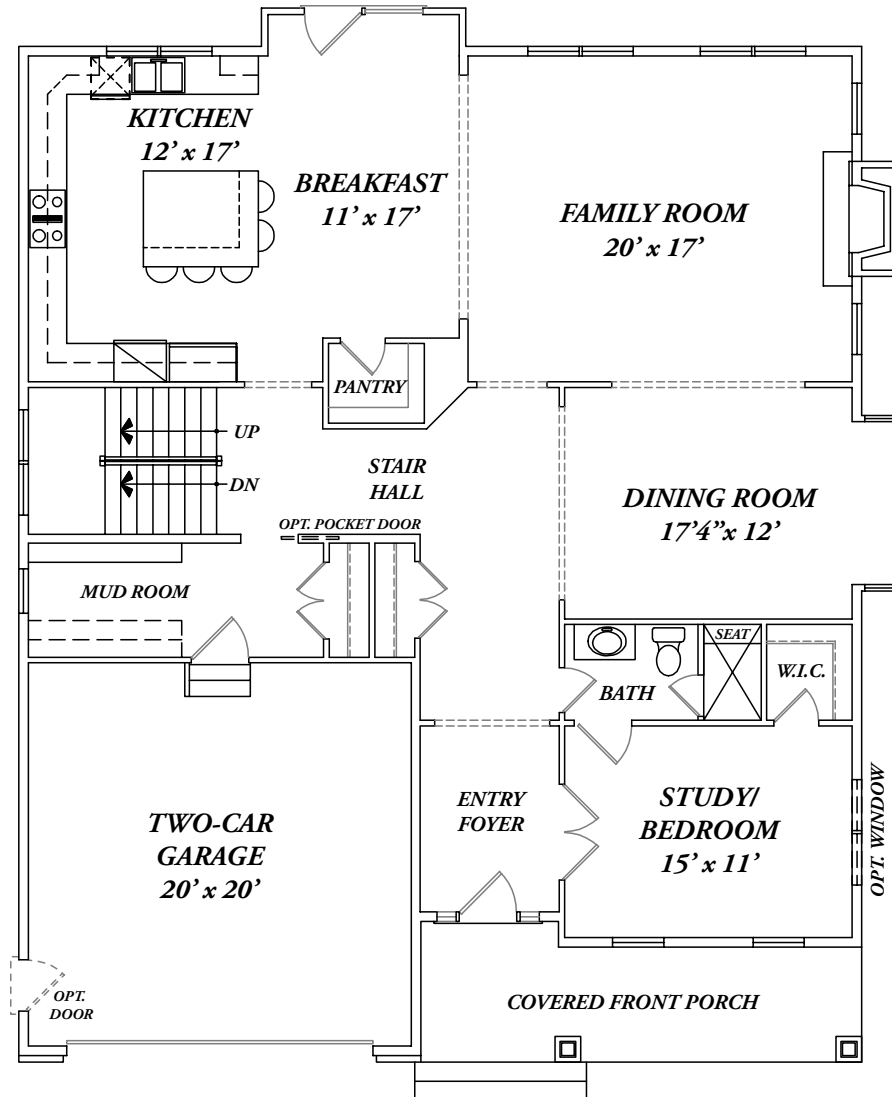


MASTERFUL DESIGN AND MODERN LUXURY.

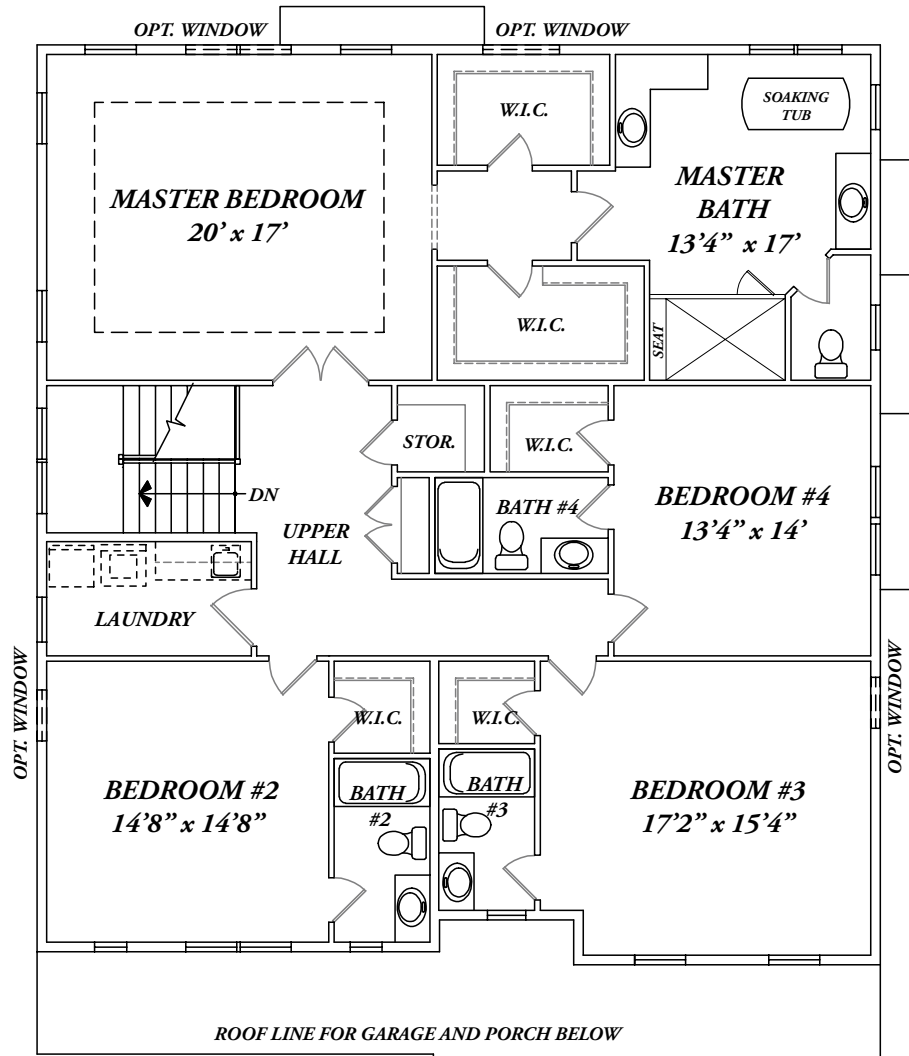


Merging design & craftsmanship, **THE HIXTON** is a residence with numerous elegant touches. An open entry foyer draws you into a light-filled main level made for entertaining and family living. A chef's kitchen, formal dining room, large family room with a focal fireplace wall and home office/library completes the main level. A divine master suite presents a tray ceiling, numerous windows and opulent bath with soaking tub and separate glass shower. Three spacious bedrooms each with a private ensuite and walk-in closet complete the second floor. The lower level features a recreation area for further customization and an option to finish a sixth bedroom suite.

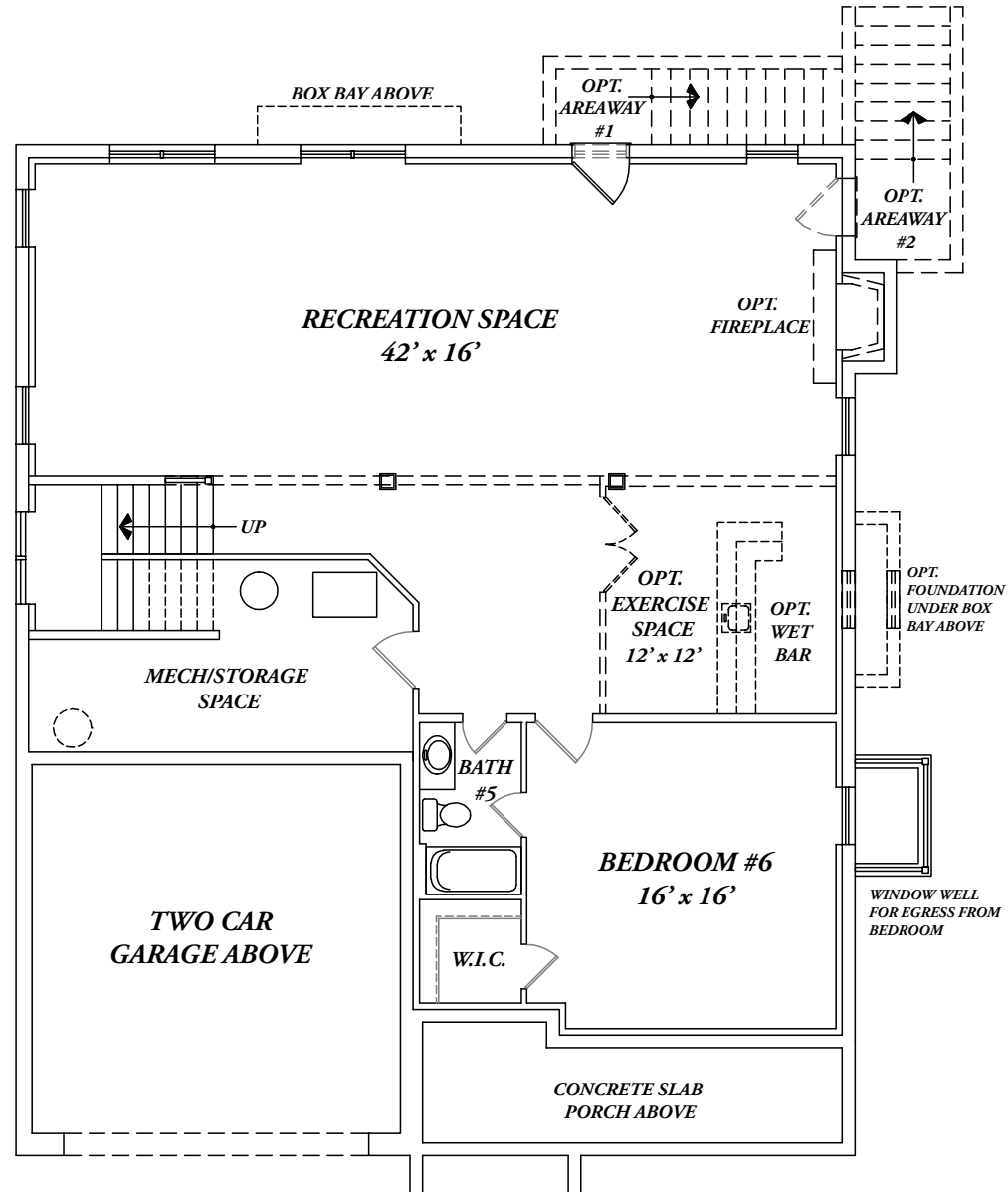




FIRST FLOOR



SECOND FLOOR



## LOWER LEVEL



ELEVATION B



EQUAL HOUSING OPPORTUNITY



[SEKASHOMES.COM](http://SEKASHOMES.COM)