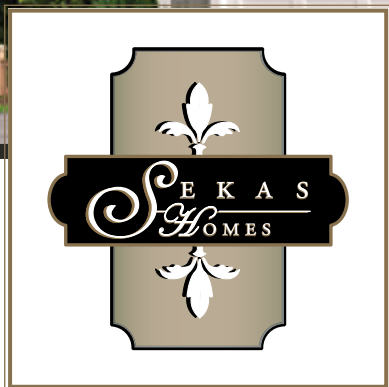


# HIXTON II

ELEVATION 1



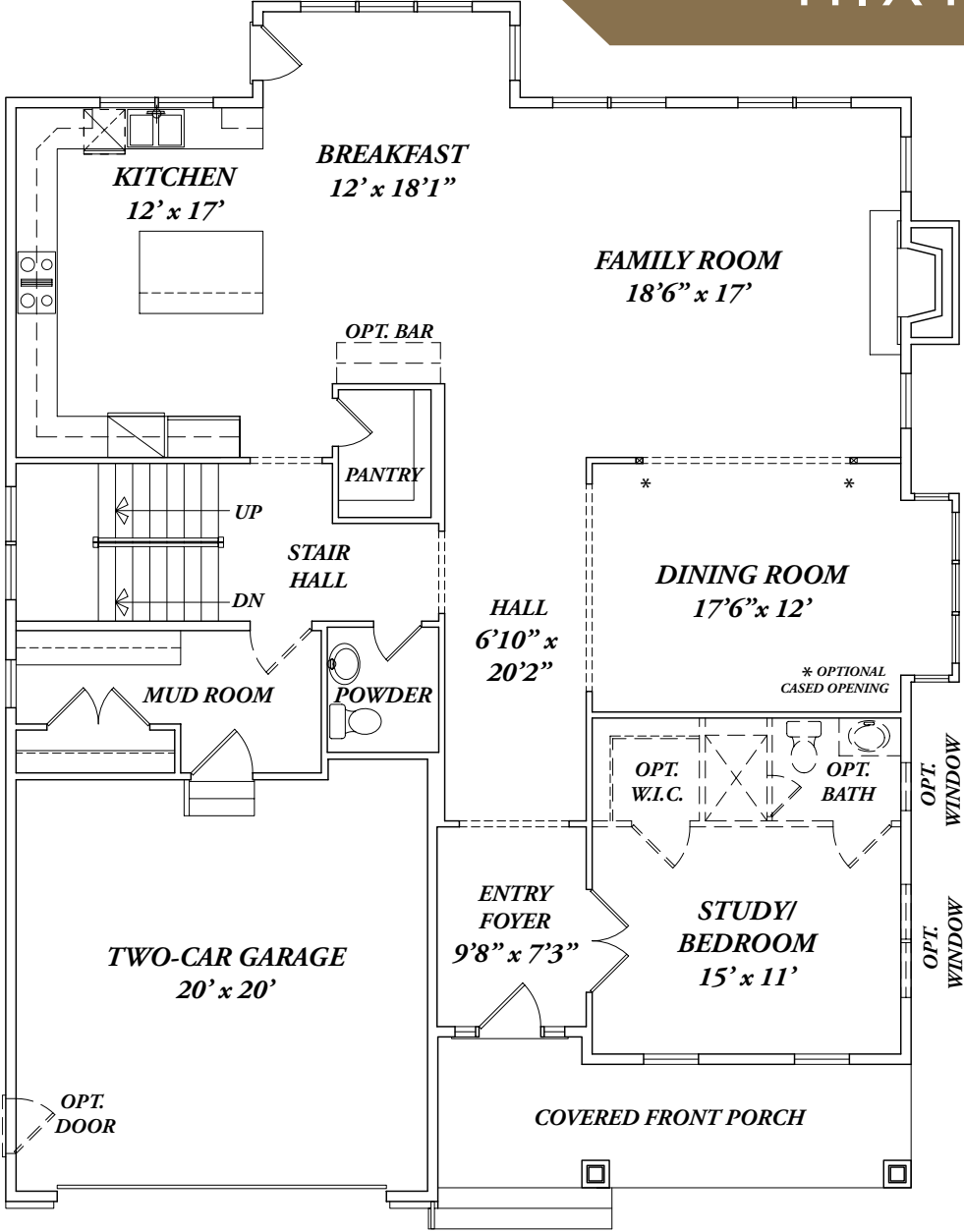
MASTERFUL DESIGN AND MODERN LUXURY.



**THE HIXTON II** features an open entry foyer which draws you into a light-filled main level made for entertaining and family living. Add a main level bedroom with full bath by converting the study. Enjoy your chef's kitchen with central island/gathering table, formal dining room, and large family room with a focal fireplace wall. A divine master suite presents a tray ceiling, mirroring walk-in closets, numerous windows and opulent bath with soaking tub, separate glass shower and dual vanities. Three spacious bedrooms each with a private ensuite and walk-in closet complete the second floor. The lower level customizations include a recreation area, exercise space, wet bar and potential sixth bedroom suite.



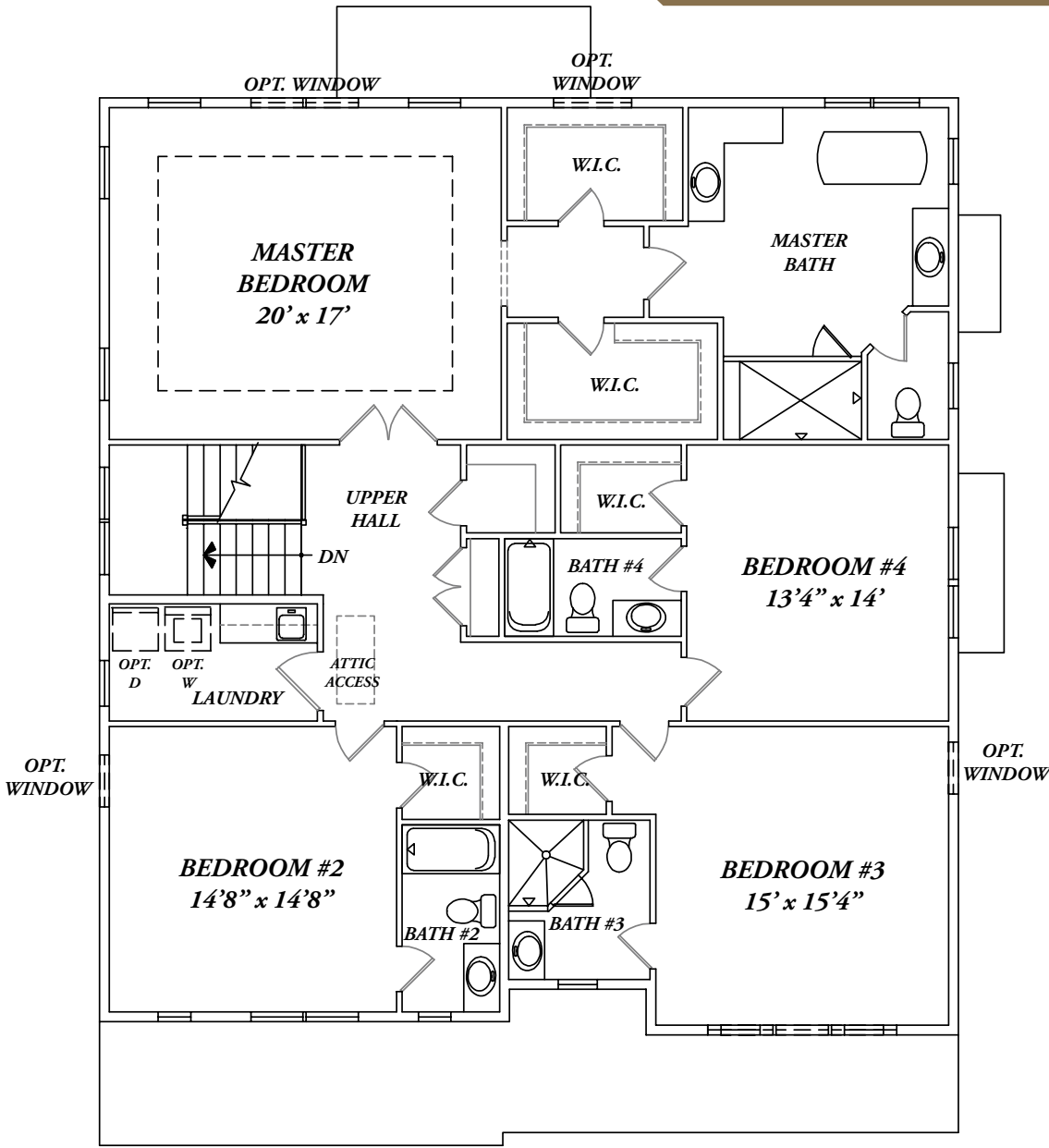
# HIXTON II



## FIRST FLOOR

All plans, renderings and images are conceptual and used for illustrative purposes only and are subject to change without notice. Builder reserves its right to change or alter its plans, specifications and materials without notice or obligation. Please consult the builder sales representative for details. 1/2022

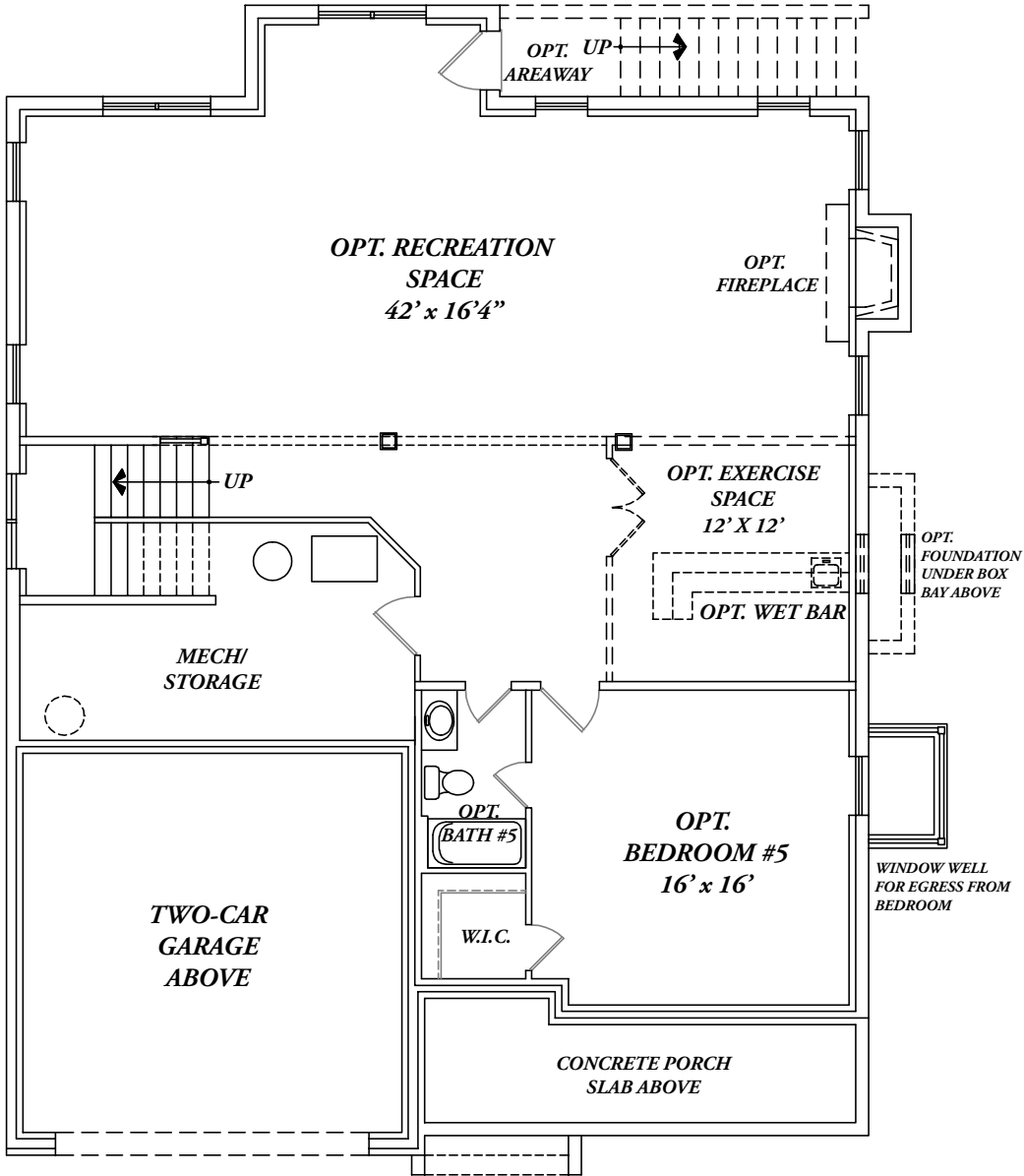
# HIXTON II



## SECOND FLOOR

All plans, renderings and images are conceptual and used for illustrative purposes only and are subject to change without notice. Builder reserves its right to change or alter its plans, specifications and materials without notice or obligation. Please consult the builder sales representative for details. 1/2022

# HIXTON II



## LOWER LEVEL

All plans, renderings and images are conceptual and used for illustrative purposes only and are subject to change without notice. Builder reserves its right to change or alter its plans, specifications and materials without notice or obligation. Please consult the builder sales representative for details. 1/2022

ELEVATION 2



[SEKASHOMES.COM](http://SEKASHOMES.COM)