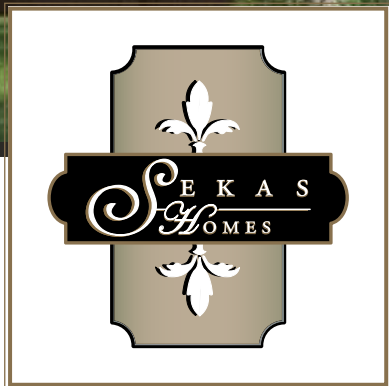


HARRISON II

ELEVATION 2



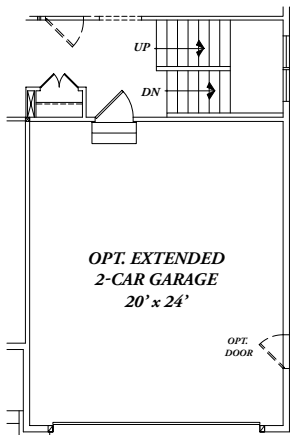
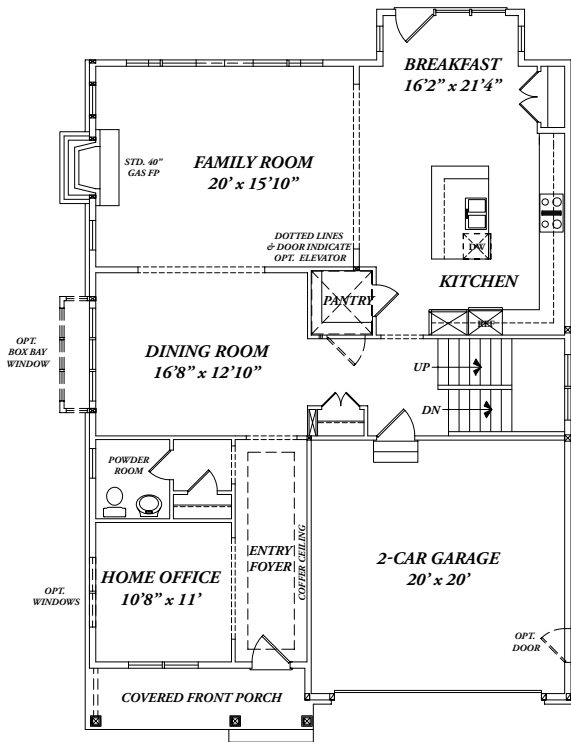
TODAY'S MODERN AMENITIES WRAPPED UP IN STYLE.

HARRISON II



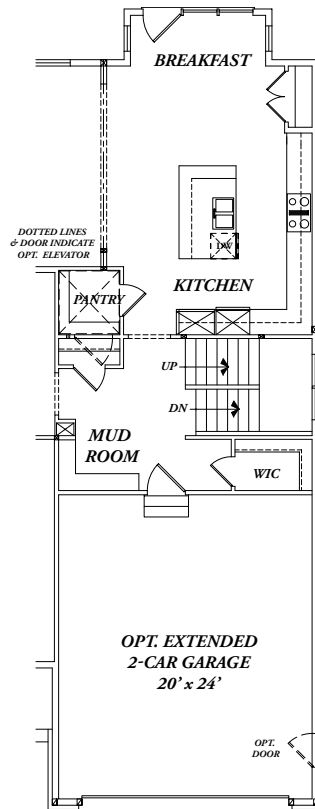
This craftsman inspired home offers four to six bedrooms including a private owner's suite with a spa-like bath and generous owner's closet. Nine foot ceilings throughout the main living areas create light-filled, open spaces. Your gourmet-appointed kitchen is a cook's dream with large entertaining center island and tons of cabinet space. A formal dining room, large family room with feature fireplace wall, main level study, optional loft/bedroom and spacious lower level that can be customized with a rec area, custom bar, bedroom and full bath are a few of the details that set this home apart.

HARRISON II



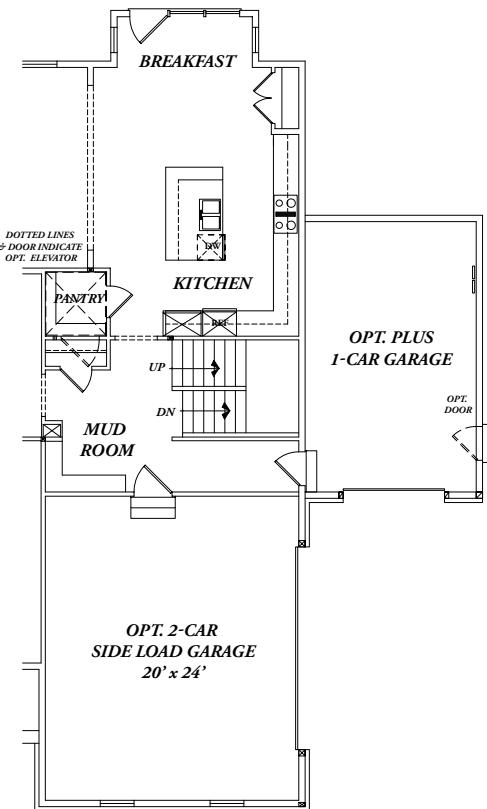
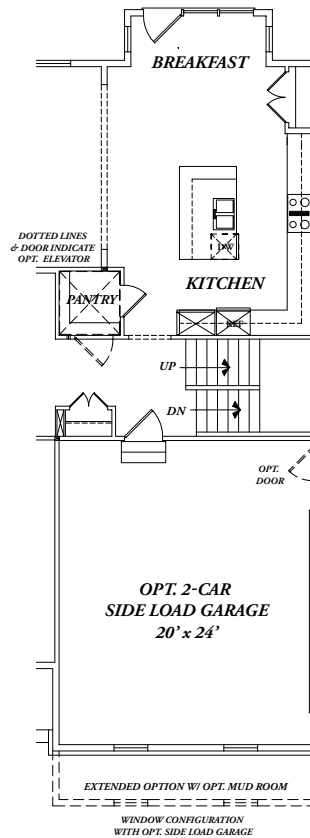
**OPT. 4' EXTENSION
W/ MUD ROOM**

OPT. 4' EXTENSION



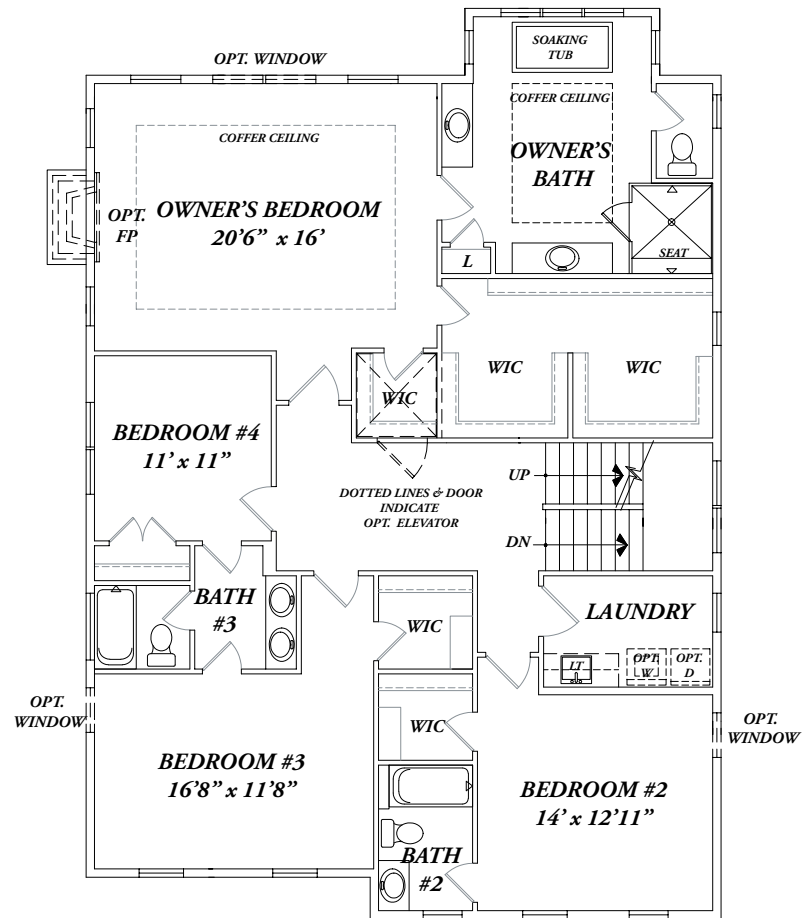
OPT. SIDE LOAD GARAGE

**OPT. SIDE LOAD GARAGE
& OPT. PLUS 1 CAR GARAGE**



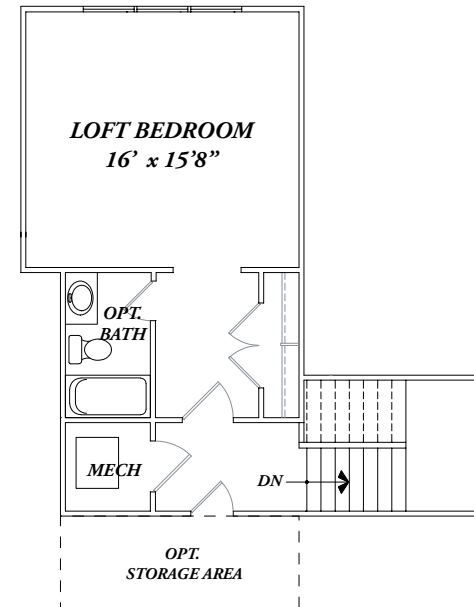
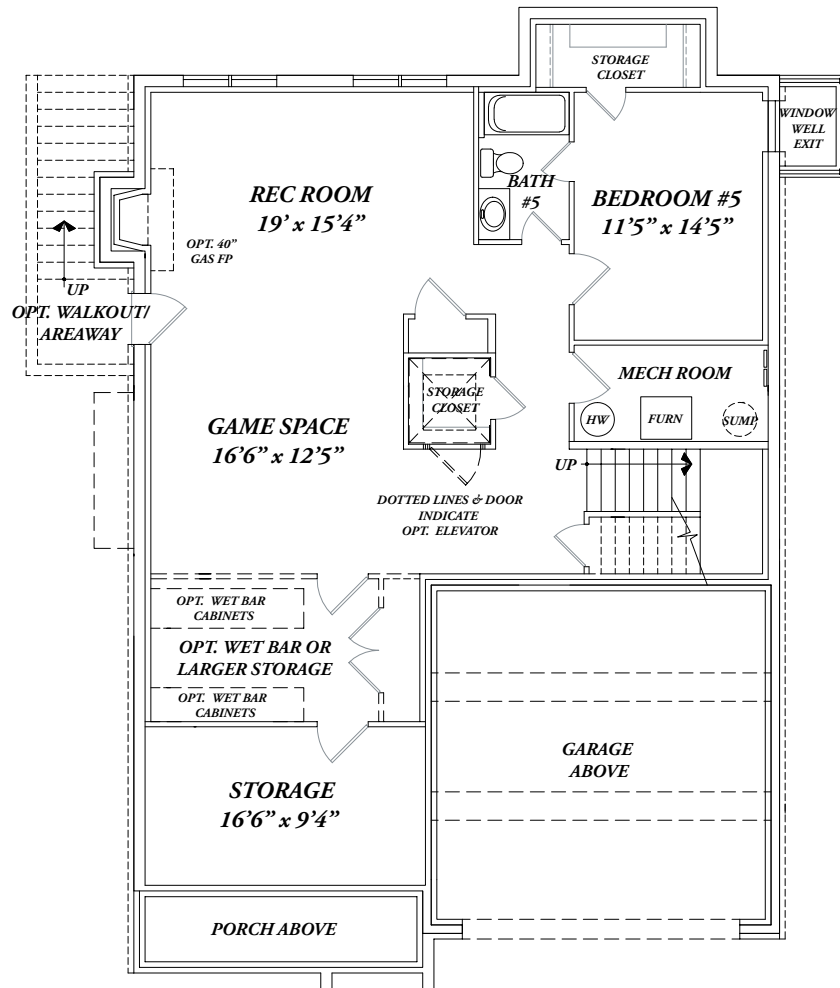
FIRST FLOOR

HARRISON II



SECOND FLOOR

HARRISON II



OPT. LOFT SPACE

LOWER LEVEL

ELEVATION 1



SEKASHOMES.COM